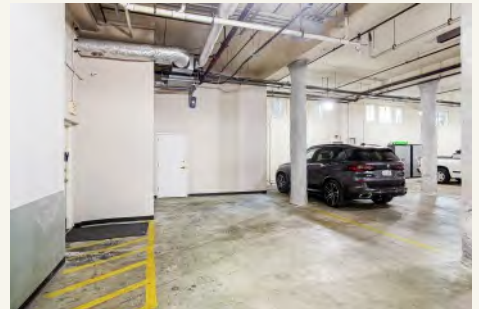
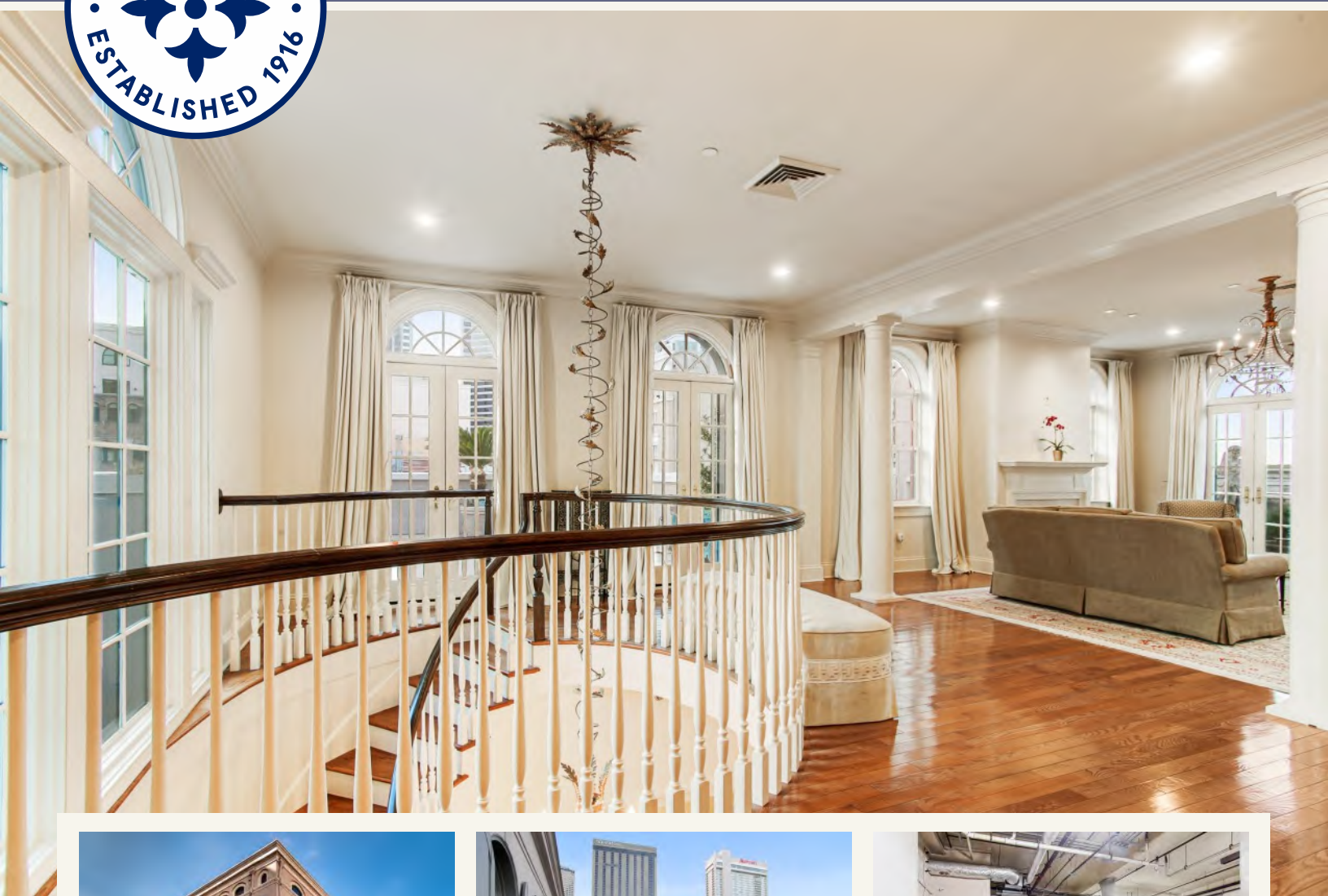




416 Common St., Penthouse B, New Orleans

\$2,400,000



## Stunning One-of-a-Kind Downtown Penthouse

The two buildings that comprise the twelve units forming the 416 Common Street condominiums have been under mutual ownership since 1902. The original five-story building at the corner of Common Street and Tchoupitoulas Street has Italianate detailing, and reflects the influence of American architect Louis Sullivan in its classical elements and grander scale. This building, together with the adjacent 1860 Italianate-styled warehouse, were completely renovated and transformed into its current configuration in 2003, with a unique layout designed by renowned local architect Peter Trapolin. One of only two penthouses in the building, Penthouse B is distinguished from other downtown condominium homes by its large bedrooms, ample storage, 1685 SF of private outdoor space, and its light-filled living areas.

The information contained herein has either been given to us by the owner of the property or obtained from sources that we deem reliable. No warranties or representations, expressed or implied are made as to the accuracy of the information contained herein, and same is submitted subject to errors, omissions, change of price, rental or other conditions, withdrawal without notice, and to any special listing conditions.

**Brigitte Fredy, CRS**  
**LATTER & BLUM**  
840 Elysian Fields Avenue  
New Orleans, LA 70117-8514  
504-616-4044 or 504-948-3011 ext. 110  
[info@brigittefredy.com](mailto:info@brigittefredy.com)





# Penthouse B

Penthouse B is the original developer's personal condominium home. Bathed in natural light, French doors open from the living room and office to two large private terraces, and from the master and guest bedrooms to another large private terrace with panoramic city views.

## Salient Facts and Unit Amenities

- ❖ 5,520 total square feet including 3,836 square feet of living area
- ❖ Three bedrooms, three full baths and two half baths
- ❖ Grand staircase, Venetian plaster walls and wood floors
- ❖ Wet bar in living room
- ❖ Pocket doors
- ❖ Chef's kitchen
- ❖ Huge primary bedroom with coved ceiling, marble bath with heated floors
- ❖ Vast walk-in closet
- ❖ Two gas fireplaces
- ❖ Double windows with storm-resistant glass
- ❖ Designated garage parking for two vehicles
- ❖ Abundant storage and condo fitness room
- ❖ Condo dues of \$1,274.00 monthly

## Kitchen

- ❖ Dacor gas range with six gas burners
- ❖ Dacor electric stove
- ❖ Dacor bread warmer
- ❖ Dacor microwave
- ❖ Dacor range hood
- ❖ GE Monogram Ice Maker
- ❖ GE Monogram Refrigerator
- ❖ Disposal
- ❖ Granite countertops
- ❖ Pantry + Mop Sink Pantry + Butler Pantry



Internet Virtual Tour  
[www.brigittefredy.com](http://www.brigittefredy.com)

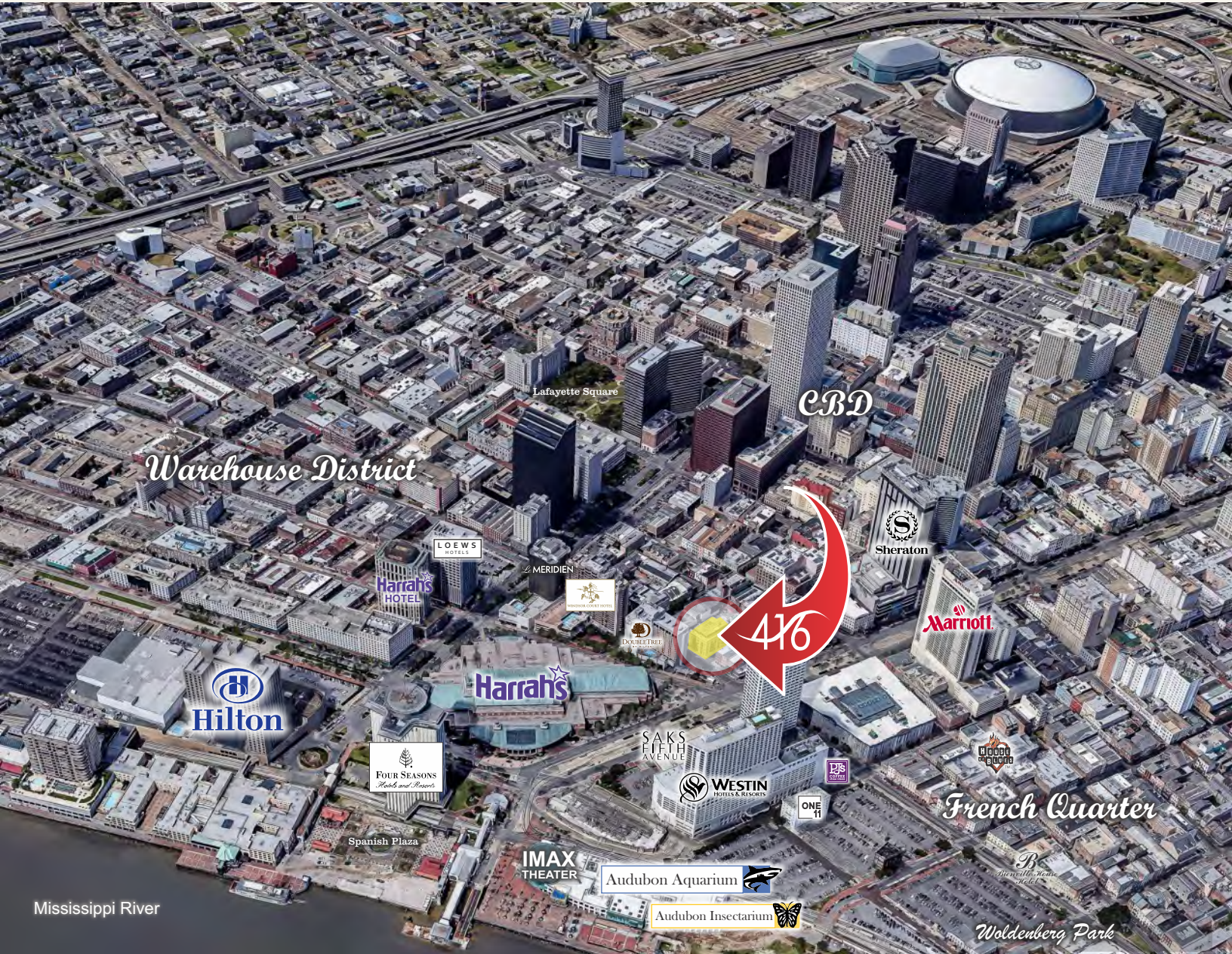




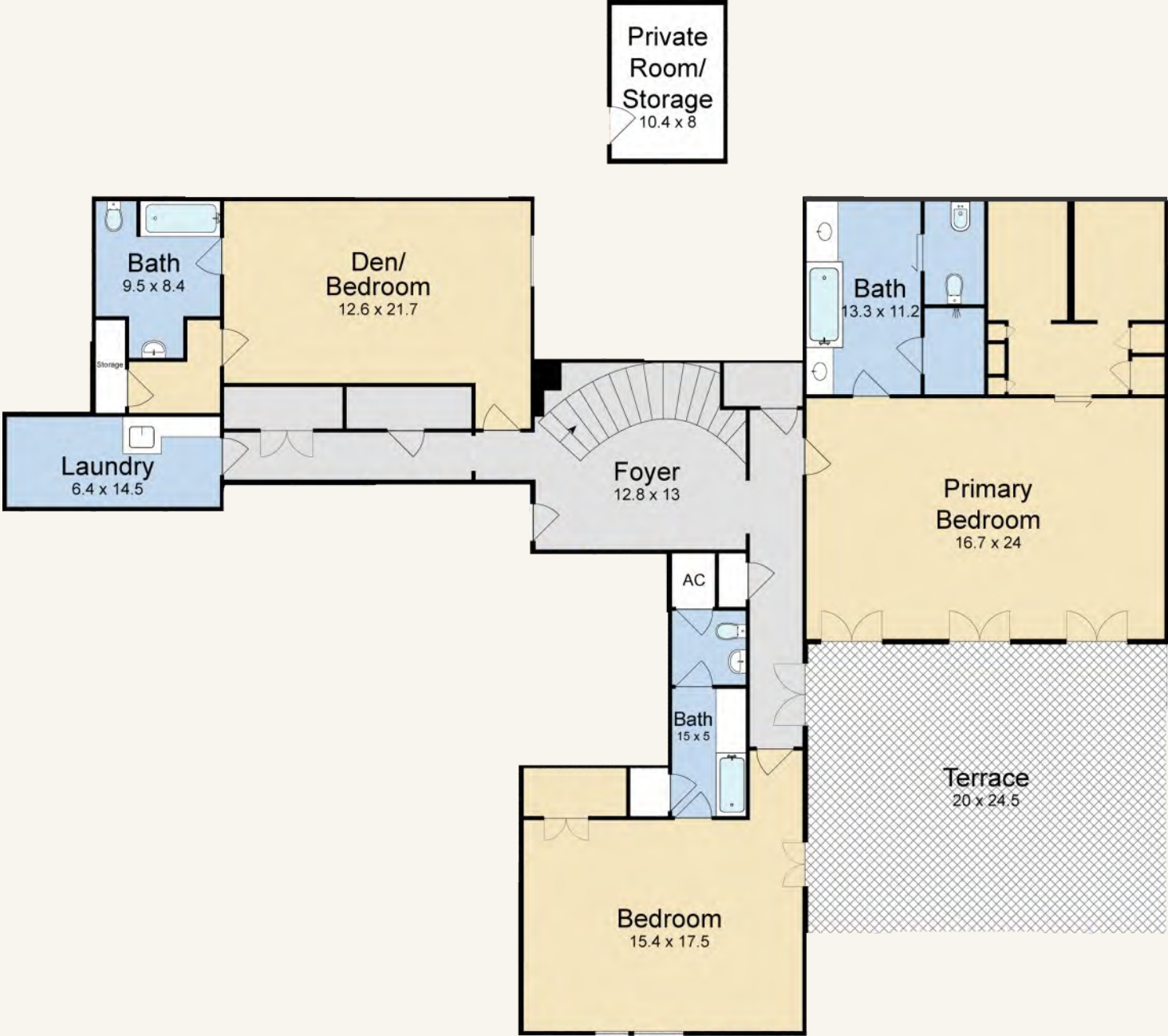




# Unparalleled Central Location



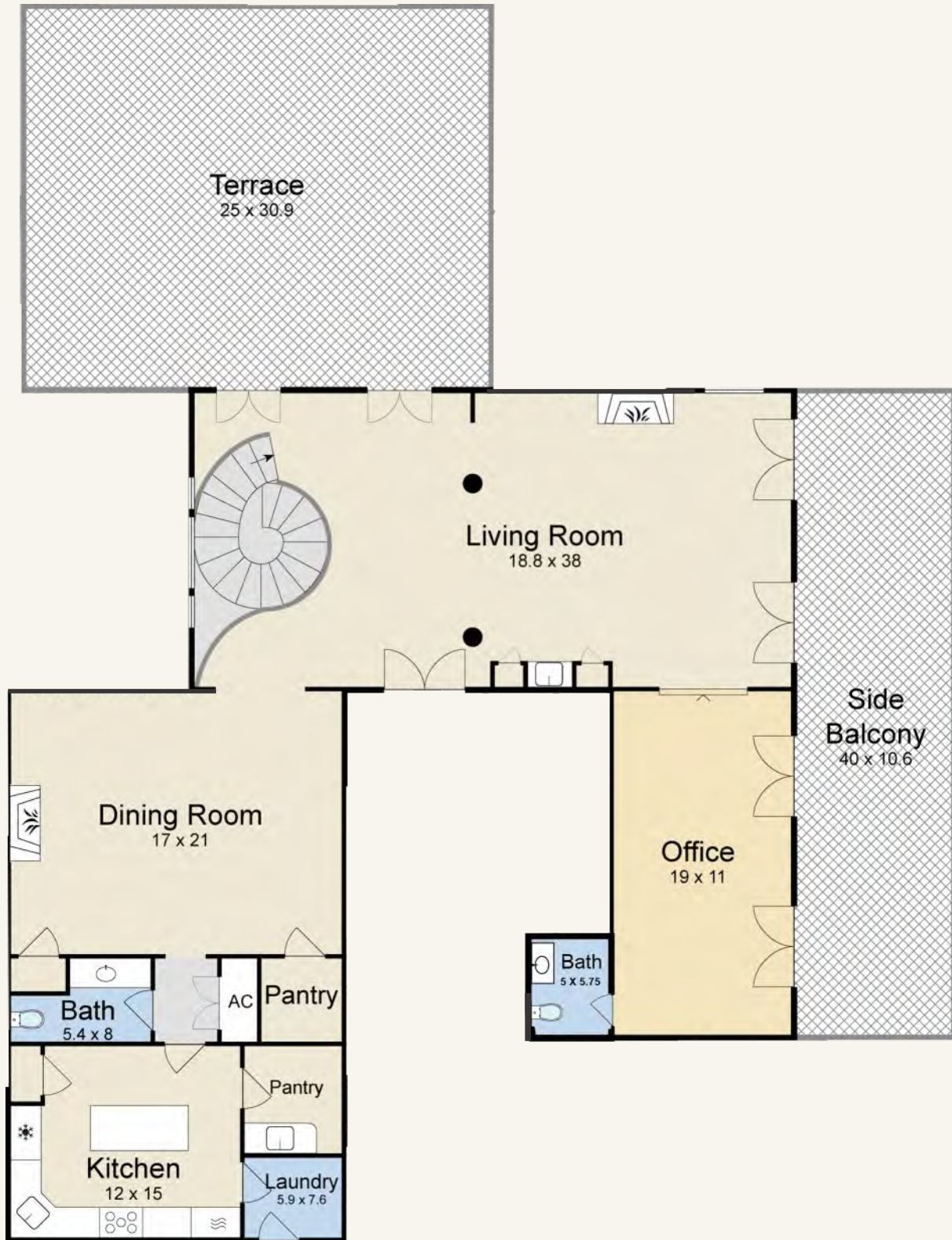
# Penthouse B 1st Floor Plan



For Guidance Only



# Penthouse B 2nd Floor Plan



For Guidance Only